

Digitization of City Assets & Audits



Innovative Business Solution

AI-powered business solution to audit & digitize key Information for every city scenario



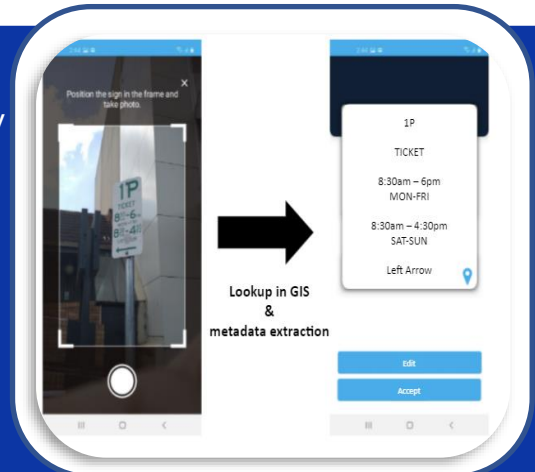
Easy Integration

Build functionality into existing applications while allowing motorists to follow parking rules



Improve Productivity

Understand all information on every street sign, have relevant data in real time on every single Location in your jurisdiction



"Welcome to the data fusion evolution – We use lightweight Machine Learning-capable devices and power our solutions with software that streamlines the extraction of hyper-accurate data, both statically and in motion, from all urban arterial roads and motorways. We do this with a combination of high-resolution cameras, multi-spectral vision, GPS and video analytics."

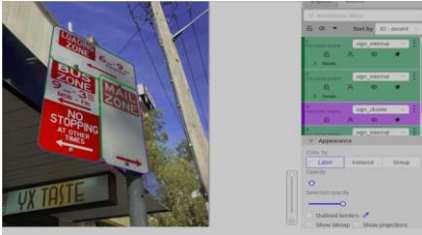
Subhash Challa, CEO, SenSen



"Digitization of assets is important to provide a better parking experience and empower the world to travel smarter."

Ubi Park, Australia

Why Digitization of City Assets & Audits



Solution Overview

Our solution uses image mapping technology to understand complex & clustered parking signs, including multiple parking rules, to ensure the safety of users & compliance with regulations. All done discreetly with no change to physical infrastructure.

EDGE FEATURES

- SenSen's in-house road asset detection software
- Patented state-of-the-art road asset GPS location
- Recorded high-resolution videos
- Seamless integration with SenSen's cloud-hosted back office (BOS)

BACK-OFFICE FEATURES

- Secured relational database for central management of assets
- Review interfaces for asset audits
- Survey of assets by precise location
- Enforcement zones with business rules
- APIs to export audited data to GIS systems

KEY FEATURES

- Collect comprehensive information on all signs within your jurisdiction
- Identify the location & Zone ID using a combination of GPS & database of stored reference images
- Detect sign boards including location coordinates with highest accuracy
- Maintain database of assets & metadata information based on geolocation
- Cloud service for matching input images with target objects
- Metadata match with reference images

ALL-IN-ONE SOLUTION

- Low cost, rapid deployment, operation ready
- Fully automatic end-to-end solution
- Edge processing & cloud data central management

BUSINESS OUTCOMES

- Increase utilization of city assets
- Help council & asset owners quantify the infrastructure under their management
- Provide exceptional customer experience by seamlessly decoding parking signs for motorists

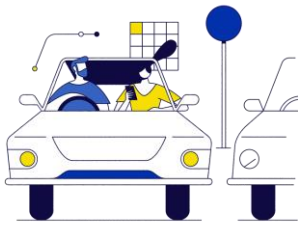


Photo of Sign Board



GPS Location



Sensen.ai

Level 1, 9 Harper Street, Abbotsford,

Victoria, 3067 Australia

Website - www.sensen.ai

Melbourne

(+61) 3 9417 5368

Sydney

(+61) 3 9417 5368

India

(+91) 40-29882270

Singapore

(+65) 9624 9834

sales@sensen.ai